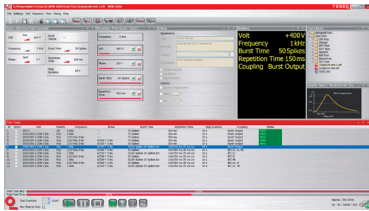




WIN 3000 REMOTE CONTROL SOFTWARE



This software marks a new milestone in the long and successful remote control software history of Teseq. The WIN 3000 represents the newest and modern graphical user interface (GUI) which runs on Windows. Care has been taken on an easy readable font with its clearly defined icons and structure.

- **Clearly structured, all information visible at a glance**
- **Workspace can be customized and saved**
- **Test reports can be edited real-time in Microsoft Word**
- **Sequencing of different pulses, assisted by universal dialog features**
- **Large and powerful standard test library**
- **Freely programmable test with up to 500 test steps**

The new GUI allows customized windows setting to fit customer best workplace. All windows can be easily pin or un-pinned to get the best focus on important parameter and its flow. The un-pinned windows can be placed on a side-out toolbar for fast access. The windows are dockable to the desired location using the "smart docking" symbol or windows can even be placed on a second monitor. The windows setting can be saved and restored for easy recall.

Parameter can be either set using the parameter window which is usable like the familiar user interface of the NSG unit or for faster user parameter setting it can be changed in the "test step" windows by a simple click on the value. In the "test step" itself can be copied or deleted by right-clicking. Different ramping method can be chosen, as well multi-parameter ramping. The parameter flow and priority can be swapped and for investigation and each individual value can be adjusted on the fly. One test can contain up to 500 test step and each test step can be triggered individually, this allows the user to create long-term test which are usable depending an selected test steps.

A flexible and continually expandable standard test library allows the user an immediate access to predefined test as well as user-created test files. Both types of tests are capable of being combined to a sequence and can be complemented with user-defined dialogs.

The dialog menu is used to create customized dialog boxes in which the user can include special instructions and comments. Dialog boxes are programmed to display at certain points in a test sequence to prompt the user to perform special functions, such as making specials measurements or changing EUT settings.

A large variety of diverse run modes gives the customer the freedom for fast and result orientated testing options. A special feature is the resizable "Run time display" windows. Customer can easy select the most wanted parameter and resize this window, so he can easily read the actual status of its test from a distance, especially useful for long term test.

The Word-based report template can be customized to the specific needs. All necessary test setting information will be chronologically printed on time and supplementary information can be added such as test setup pictures. In case of an EUT-Fail input, the fail values will be reported as well as the selected actions. .

Teseq AG
Nordstrasse 11F 4542 Luterbach Switzerland
T +41 32 681 40 40 F +41 32 681 40 48
sales@teseq.com www.teseq.com

© February 2011 Teseq®
Specifications subject to change without notice.
Teseq® is an ISO-registered company. Its products are designed and manufactured under the strict quality and environmental requirements of the ISO 9001. This document has been carefully checked. However, Teseq® does not assume any liability for errors or inaccuracies.

