

The GenII MS “Mini Squirrel” is a new series of compact stand-alone data loggers.

The first release of the GenII MS “Mini Squirrel” series is intended for RH, temperature and CO₂ applications. The dataloggers are of rugged construction, battery operated and ideal for short or long term environmental monitoring.

Mini Squirrel is ideal for monitoring smaller spaces such as galleries or laboratories. A feature of the Mini Squirrel is ease of deployment and data download. A top panel mounting jack socket is provided for data download. The scrolling LCD display provides real time sensor values and screen prompts inform the user that the logger is set up and ready to go as required.

Eltek’s Darca Lite Windows software is designed for use with the MS Mini Squirrel, enabling the user to configure, download data, and graph historic data quickly and easily. An LC99 communications lead is required to connect the mini squirrel to a PC - this must be ordered separately.

MS Mini Squirrel loggers

MS13E / MS14E



MS13E and RHT10E high spec RH and temperature probe can be placed precisely where needed. MS14E additionally provides two temperature (thermistor) inputs.

Specification

RHT10E: RH: 0-100%
Temp: -30°C to 65°C
Thermistor (MS14E only): -40°C to 70°C

N.B. the connected Eltek probe thermistor accuracy is: ±0.1°C (0°C to 70°C)
Battery pack: 4 x AA non rechargeable
Long battery life - typically several years at 5 minute log/transmit interval.

MS47AC / MS47B



Indoor, AC mains or battery operated air quality transmitter with built-in CO₂ 0-5000ppm NDIR technology, RH and temperature sensors.

Specification

RH: 0-100%
Temp: -30°C to 65°C
CO₂: 0-5000ppm

MS47B

Supplied battery: non rechargeable 6 x AA pack for > 4 months operation
Optional battery: Lithium EL47BATT for > 6 months operation

MS47AC AC mains operated with 100 hour built in back up battery

MS10



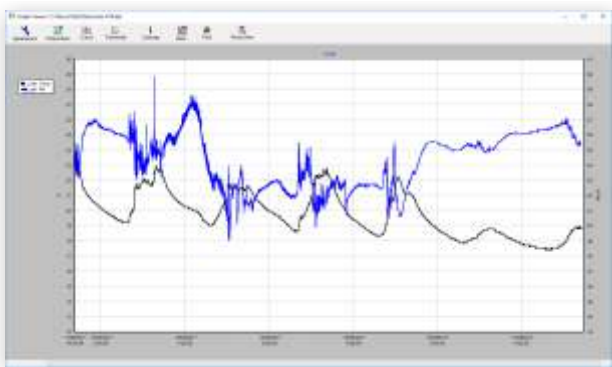
Perfect for environmental monitoring. With built in RH and temperature sensors, easy and low cost.

Specification

RH: 0-100%
Temp: -30°C to 65°C
Battery pack: 4 x AA non rechargeable
Long battery life - typically several years at 5 minute log/transmit interval

Mini Squirrels will be available soon for 1,2,4 and 8 thermistor inputs, 1 and 4 thermocouple inputs and 2 PT100 inputs. Mini Squirrels can be provided for Lux, UV, Air Velocity and more – refer to Eltek Ltd or your local Eltek distributor.

Darca Lite Software



Eltek's Darca Lite software allows configuration, download and analysis of Mini Squirrel devices.

- Fully compatible with Darca Plus data
- Detailed graphing of saved data
- Print graphs
- View data in real time
- Export data as CSV
- Download data with or without stopping logging
- Software updates on Eltek website

Common device specification

Operating environment

Temperature: -5 to +55°C, RH: 0-95% non condensing
Environmental rating: IP50
(Secondary enclosure available for outdoor use, rated IP60)

Data storage

Logging interval: 1 second to 24 hours
Memory capacity is expressed in "readings"
One channel enabled is 87,000 readings
Two channels enabled is 104,000 readings
Three channels enabled is 112,000 readings
Four channels enabled is 118,000 readings

Channel allocations can be renamed using Eltek software.
For example, Channel 1 can be configured to appear as "Main Gallery"

Number of recording runs: 1

LCD display example

Function	LCD
Logging mode - alternates between device status and current reading	



Guarantee Equipment manufactured by Eltek is guaranteed against faulty materials or workmanship for three years. For repairs carried out under guarantee, no charge is made for labour, materials or return carriage.

Input specification

Parameter	Measurement Range	Accuracy	Resolution
MS10			
RH	0-100%	±2% (10 to 90%) RH	0.1%
		±4% (0 to 100%) RH	0.1%
Temperature	-30 to +65°C	±0.4°C (+5 to +40)°C	0.1°C
		±1.0°C (-20 to +65)°C	0.1°C
		±1.5°C (-30 to -20)°C	0.1°C
MS13E and MS14E: RHT10E RH and temperature input			
RH	0-100%	±2% (10 to 90%) RH	0.1%
		±4% (0 to 100%) RH	0.1%
Temperature	-40 to +120°C	±0.4°C (+5 to +40°C)	0.1°C
		±1.0°C (-20 to +80°C)	0.1°C
MS14E: Thermistor temperature input			
Temperature	-40 to +70°C	±0.2°C (-15 to +40)°C	0.1°C
		±0.4°C (-29 to +65)°C	0.2°C
		±0.6°C (-36 to +70)°C	0.3°C
		±0.8°C (-40 to -36)°C	0.4°C
Eltek thermistor accuracy	±0.1°C (-0 to +70)°C		
MS47AC and MS47B			
RH	0-100%	±2% (10 to 90%) RH	0.1%
		±4% (0 to 100%) RH	0.1%
Temperature	-30 to +65°C	±0.4°C (+5 to +40)°C	0.1°C
		±1.0°C (-20 to +65)°C	0.1°C
		±1.5°C (-30 to -20)°C	0.1°C
CO ₂	0-5000ppm	<±50ppm +3% of measured value over the range -10 to +50°C	
Temperature dependence typically 2ppm CO ₂ /°C over the range 0 to +50°C. Pressure dependence is 0.14% of measured value/mBar deviation. The CO ₂ built in sensor is functional at -20°C, however the accuracy cannot be quantified. MS47AC: CO ₂ value is updated every 15 seconds MS47B: CO ₂ value is updated every 300 seconds.			

Optional Accessories

Battery Pack

EL47-CBAT battery pack: extends battery operation to greater than 6 months. Used in place of the 6 x LR6 battery pack and comprises 2 x lithium thionyl chloride non-rechargeable batteries on a carrier board with self-resetting fuse. The pack is rated as 7.7Ah.

Wall Bracket

WBG: Wall bracket docking kit



Eltek

Specialist Data Loggers
Eltek Ltd, 35 Barton Road, Haslingfield
Cambridge, CB23 1LL, England
Tel: +44 (0) 1223 872111
Fax: +44 (0) 1223 872521
email: sales@eltekdataloggers.co.uk
http://www.eltekdataloggers.co.uk